

**KOMATSU**

# ***FX20/GX20***

*series*



**KOMATSU FORKLIFT**



# *Ultimate Power and Stability*



*Operability, productivity and economy are the themes underlying the FX20/GX20 series design. A high-performance engine for better power, highly reliable wet-disc brakes, a highly rigid mast, and electrically controlled four-speed transmission for excellent travel speed and acceleration make FX20/GX20 machines a joy to operate, as well as strong contributors to a company's bottom line.*

## ***FX20*** series



**FD150-6/FD180-6/FD200Z-6**

## ***GX20*** series



**FD200-6/FD250Z-6**



# Superb Productivity

## Excellent Travel Performance

Powerful engine and nimble four-speed transmission bring travel speed and performance to the fore.



**GX20**  
(FD250Z-6) [ Unloaded ]

**34 km/h**  
(21.1mph)

**FX20**  
(FD150-6) [ Unloaded ]

**29 km/h**  
(18.0mph)

**GX20**  
(FD250Z-6) [ Loaded ]

**270 mm/s**  
(53.1fpm)

**FX20**  
(FD150-6) [ Loaded ]

**360 mm/s**  
(70.9fpm)

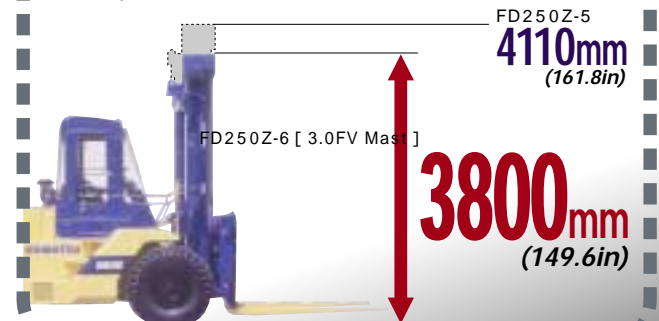
## Fast Lifting Speeds

Hydraulic circuit has been optimized to achieve top-of-the-class lifting speeds.



## Low Mast Height

Low mast height makes loading, unloading and other on-ship tasks easier.



## Emission-Controlled Exhaust

The FX20/GX20 series is the first in its class to employ emission-controlled diesel engines.



**6CT8.3-215**  
**GX20** series engine

Rated output  
**166 kW** (226HP)  
@ 2200min<sup>-1</sup>

Displacement: 8267cm<sup>3</sup> (504.5cu.in)

**6BG1-T**  
**FX20** series engine

Rated output  
**118 kW** (160HP) @ 2200min<sup>-1</sup>

Displacement: 6494cm<sup>3</sup> (396.3cu.in)

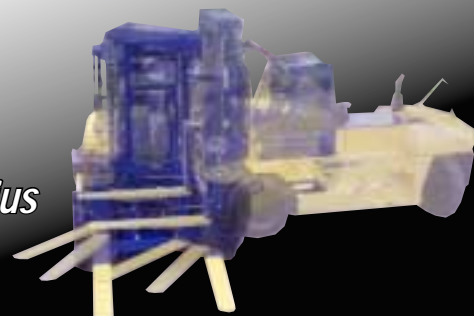
## Hydrostatic Power Steering

Fully hydrostatic power steering system minimizes kickback. Also, a reduced turning ratio allows the operator to handle sharp turns with ease.



## Small Turning Radius

Sharp turning radius provides better maneuverability in tight spaces and better job efficiency.

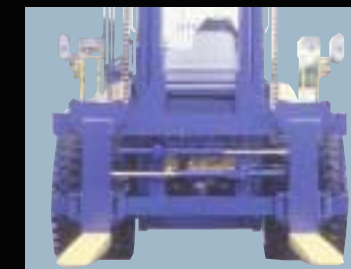


FD250Z-6



## Free-View Mast

Efficient mast design offers good forward visibility for better operating productivity.



## Hydraulic Fork Positioner (Optional)

Hydraulic fork positioner with side shift function substantially improves operational efficiency.

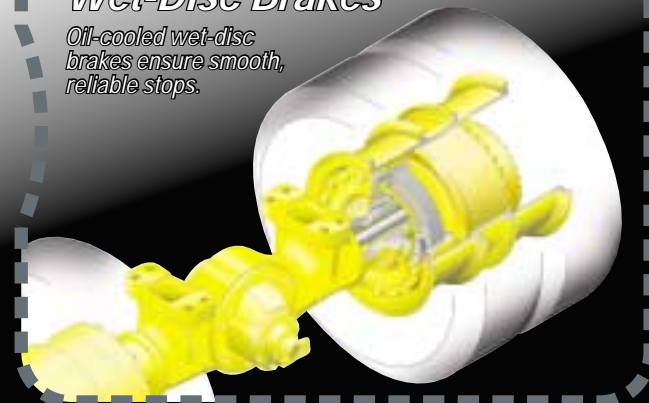


## Optimal Rear View

Wider viewing angle and rear under mirror help confirm that the path is clear.

## Wet-Disc Brakes

Oil-cooled wet-disc brakes ensure smooth, reliable stops.





# Excellent Comfort and Convenience



## Integrated Instrument Panel

With all instruments in a single panel, major machine conditions can be monitored at a single glance.

Speedometer

Integrated meter panel for at-a-glance checks

Meters	Safety indicators
1 Hourmeter	5 Engine oil pressure warning lamp
2 Water temperature gauge	6 Charge warning lamp
3 Torque converter oil temperature gauge	7 Operation lamp
4 Needle-type fuel gauge	8 Air cleaner element warning lamp
	9 Coolant level warning lamp
	10 Parking brake lamp



## Excellent Shifting

A rugged four-speed transmission and easy-to-operate electric control lever allow quick forward/reverse shifts. Also, a smooth-shifting automatic transmission (optional) is available for optimal gear selection even under frequent grade changes.



## Integrated Control

Integrated headlamp and direction indicator control column offers easy one-hand operation.



## Comfortable Seat

Blow-formed for durability, a new suspension seat with reclining function is provided as standard, for hours of working comfort.



## Tiltable Steering Column

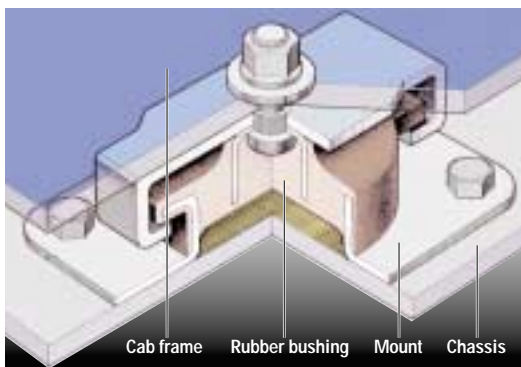
A tiltable steering column ensures convenient, fatigue-free operation.



## Steel Cab (Optional)

As an option, a fully enclosed steel cab allows the operator to work in quiet comfort.

# Easy Maintenance



## Full-Floating Suspended Cab

Full-floating suspended cab insulates operator from machine vibrations and provides hours of operator comfort.



## Mounting and Dismounting

Generously wide steps with skid-proof coating are conveniently placed for safe machine mounting and dismounting.



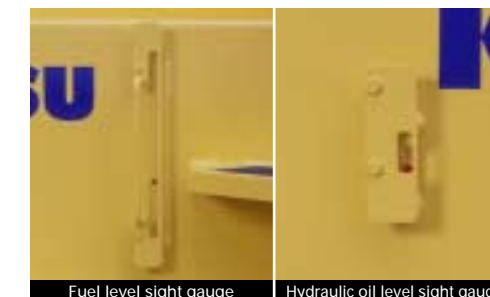
## Back-up Light and Buzzer

A backup lamp lights and a buzzer sounds to caution people in the vicinity when the machine is in reverse.



## Bonnet Cover

The top and sides of the bonnet cover fold out of the way for easy access.



## At-a-Glance Checks

A large fuel tank allows hours of work without the need for frequent fueling stops. Also, exterior fuel and hydraulic oil sight gauges allow simple checks of the machine's vital fluids from the ground.



## Air Cleaner

Easy access to the air cleaner, which extends outside the machine, encourages regular checks. As back-up, a warning lamp inside the cab indicates clogging.

## FX20 series

Model			FD150-6	FD180-6	FD200Z-6
Capacity at 900mm(36in) Load Center		kg(lb)	15000(33,000)	18000(40,000)	20000(44,000)
Std. Fork Height	h3	mm(in)	3000(118)	3000(118)	3000(118)
Tilt Angle Forward/Backward	/	degree	6/12	6/12	6/12
Overall Length to Fork Face	ℓ2	mm(in)	5325(209.6)	5385(212.0)	5385(212.0)
Overall Height Mast Lowered	h1	mm(in)	3300(129.9)	3600(141.7)	3640(143.3)
Mast Extended	h4	mm(in)	4790(188.6)	5090(200.4)	5130(202.0)
Overhead Guard	h6	mm(in)	3295(129.7)	3325(130.9)	3360(132.3)
Overall Width	b1	mm(in)	2985(117.5)	3015(118.7)	3095(121.9)
Turning Radius	Wa	mm(in)	5000(196.9)	5000(196.9)	5000(196.9)
Service Weight		kg(lb)	21680(47,800)	25125(55,390)	26880(59,260)
Tyre Size	Front		12.00-24-16PR	13.00-24-18PR	14.00-24-20PR
	Rear		12.00-24-16PR	13.00-24-18PR	14.00-24-20PR
Engine Model			ISUZU 6BG1-T	ISUZU 6BG1-T	ISUZU 6BG1-T

## GX20 series

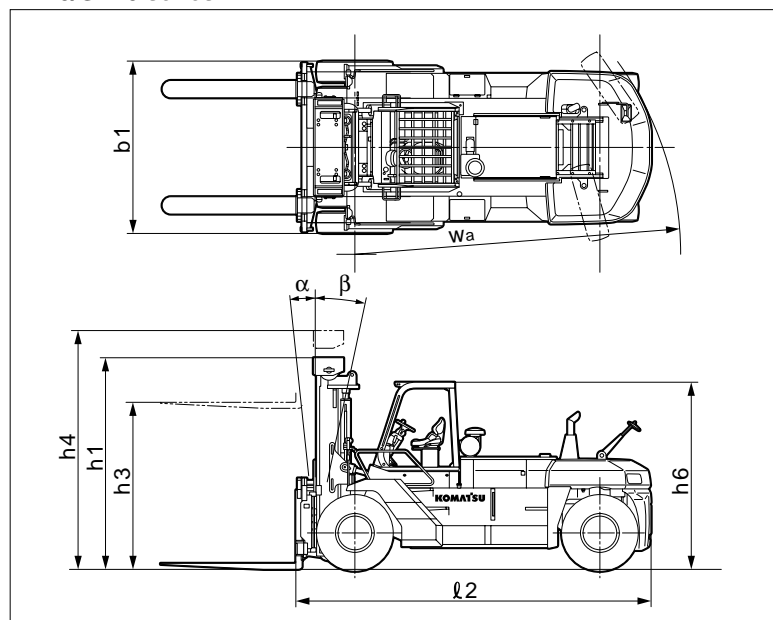
Model			FD200-6	FD250Z-6
Capacity at 1220mm(48in) Load Center		kg(lb)	20000(44,000)	25000(55,000)
Std. Fork Height	h3	mm(in)	3000(118)	3000(118)
Tilt Angle Forward/Backward	/	degree	6/12	6/12
Overall Length to Fork Face	ℓ2	mm(in)	6270(246.8)	6275(247.0)
Overall Height Mast Lowered	h1	mm(in)	3800(149.6)	3800(149.6)
Mast Extended	h4	mm(in)	5290(208.3)	5290(208.3)
Overhead Guard	h6	mm(in)	3360(132.3)	3360(132.3)
Overall Width	b1	mm(in)	3095(121.9)	3095(121.9)
Turning Radius	Wa	mm(in)	5850(230.3)	5850(230.3)
Service Weight		kg(lb)	29300(64,600)	32535(71,730)
Tyre Size	Front		14.00-24-20PR	14.00-24-24PR
	Rear		14.00-24-20PR	14.00-24-24PR
Engine Model			Cummins 6CT8.3-215	Cummins 6CT8.3-215

## Engine

Model		ISUZU 6BG1-T	Cummins 6CT8.3-215
Fuel		Diesel	Diesel
Rated Output	kW(HP) @ min <sup>-1</sup>	118(160)@2200	166(226)@2200
Max.Torque	Nm(lbft) @ min <sup>-1</sup>	588(434)@1600	912(673)@1500
Displacement	cm <sup>3</sup> (cu.in)	6494(396.3)	8267(504.5)

SAE gross

## FX20/GX20 series



Forklift trucks in this catalog may be shown with optional equipment. Specification values quoted in this catalog have been rounded, so direct conversions between metric and Imperial units may differ slightly from those shown. Komatsu products and specifications are subject to upgrade and change without notice. Performance may vary, depending on actual operating conditions. The performance values indicated herein represent nominal values obtained under typical operating conditions.

### Standard Equipment

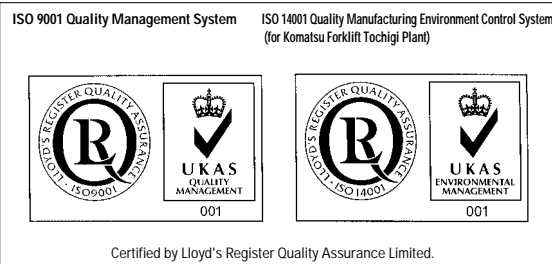
Headlights Turn signal lamps Stop and tail lamps  
Backup lamps Tiltable steering column  
Deluxe operator seat  
Floor mat Overhead guard Cyclonic air cleaner  
Rear view mirror Rear under mirror Backup buzzer  
Fuel cap with lock key Manual fork positioner Drawbar pin

### Options

Steel cab Automatic transmission Air conditioner  
Rear working light Fire extinguisher Load indicator  
Rotating lamp

### Attachments

Hydraulic fork positioner with side shift function  
Ram



Certified by Lloyd's Register Quality Assurance Limited.

# Komatsu Forklift Co., Ltd.

Head office 2-3-4, Akasaka, Minato-ku, Tokyo 107-8474, Japan

<http://www.lift.co.jp>

Fax 81-3-3224-7551 (Tokyo, Japan)